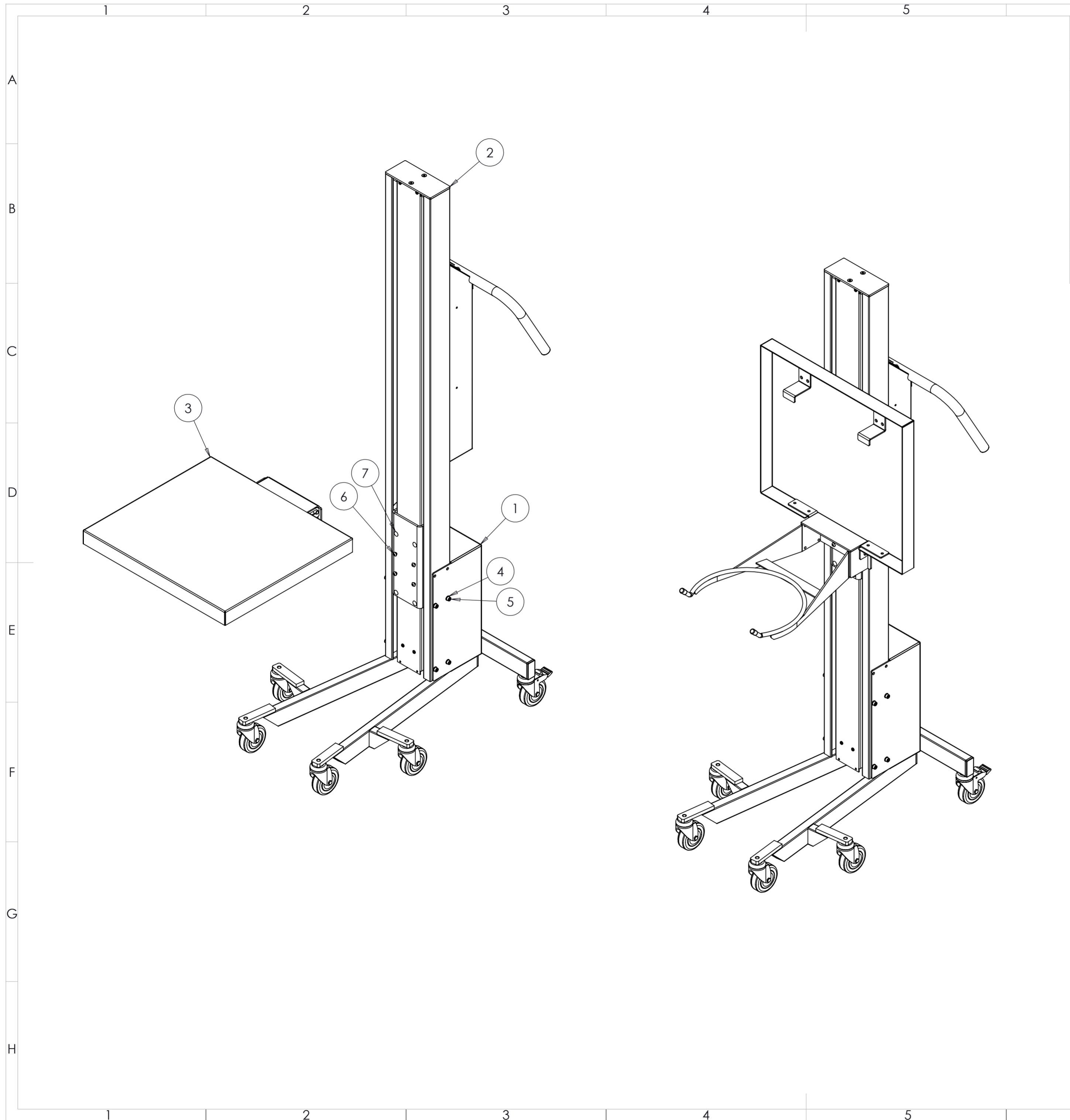


UNLESS OTHERWISE SPECIFIED: DIMENSIONS ARE IN MILLIMETERS AND WITH TOLERANCES AFTER D5/ISO 2768-1 MIDDLE.				FINISH:	DEBUR AND BREAK SHARP EDGES	DO NOT SCALE DRAWING	Version: 1
				HOVMAND			
REVISION	NAME	LOCATION	DATE	TITLE:			
2							
3							
4							
5							
6					MATERIAL:	DWG NO.	110522000001
7							A2
8							1:20
9					WEIGHT: 43.59 Kg	DRAWN BY: LL	Date: 12-04-2016 SHEET 1 OF 2



ITEM NO.	PART NUMBER	DESCRIPTION	Default/QTY.
1	40010038	Legtype Emma 3	1
2	40010016	Mast Emma 3 Komplet	1
3	40010061	Kedelgaffel 30-60L Emma 3	1
4	81030006	6mm Skive FZB DIN 125-A	8
5	81010117	Skrue 6x10 CH FZB DIN 912	8
6	81010104	Skrue 6x10 RH A2 ISO 7380	4
7	81140040	Dækknap ø5,5/13 sort	4

UNLESS OTHERWISE SPECIFIED: DIMENSIONS ARE IN MILLIMETERS AND WITH TOLERANCES AFTER DS/ISO 2768-1 MIDDEL		FINISH:	DEBUR AND BREAK SHARP EDGES	DO NOT SCALE DRAWING	Version: 1										
<table border="1"> <thead> <tr> <th>REVISION</th> <th>NAME</th> <th>LOCATION</th> <th>DATE</th> <th>TITLE:</th> </tr> </thead> <tbody> <tr> <td> </td> <td> </td> <td> </td> <td> </td> <td> </td> </tr> </tbody> </table>			REVISION	NAME	LOCATION	DATE	TITLE:						HOVMAND Emma 3 Complete 30-60L Kitchen		
			REVISION	NAME	LOCATION	DATE	TITLE:								
MATERIAL: ALU/Steel		DWG NO. 110522000001		A2											
WEIGHT: 43.59 Kg		DRAWN BY: LL		Date: 12-04-2016 SHEET 2 OF 2											